

NOVEL **PARK**
New Technology Services

沃溪科技股份有限公司
NovelPark Co., Ltd

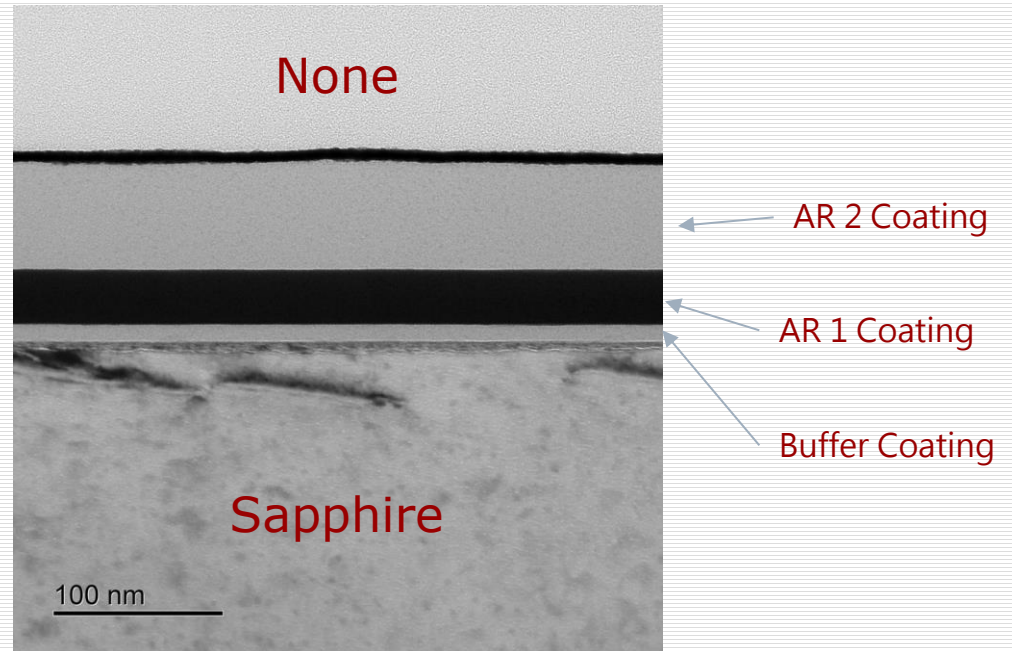
SAPPHIRE WINDOW

Window by Novelpark

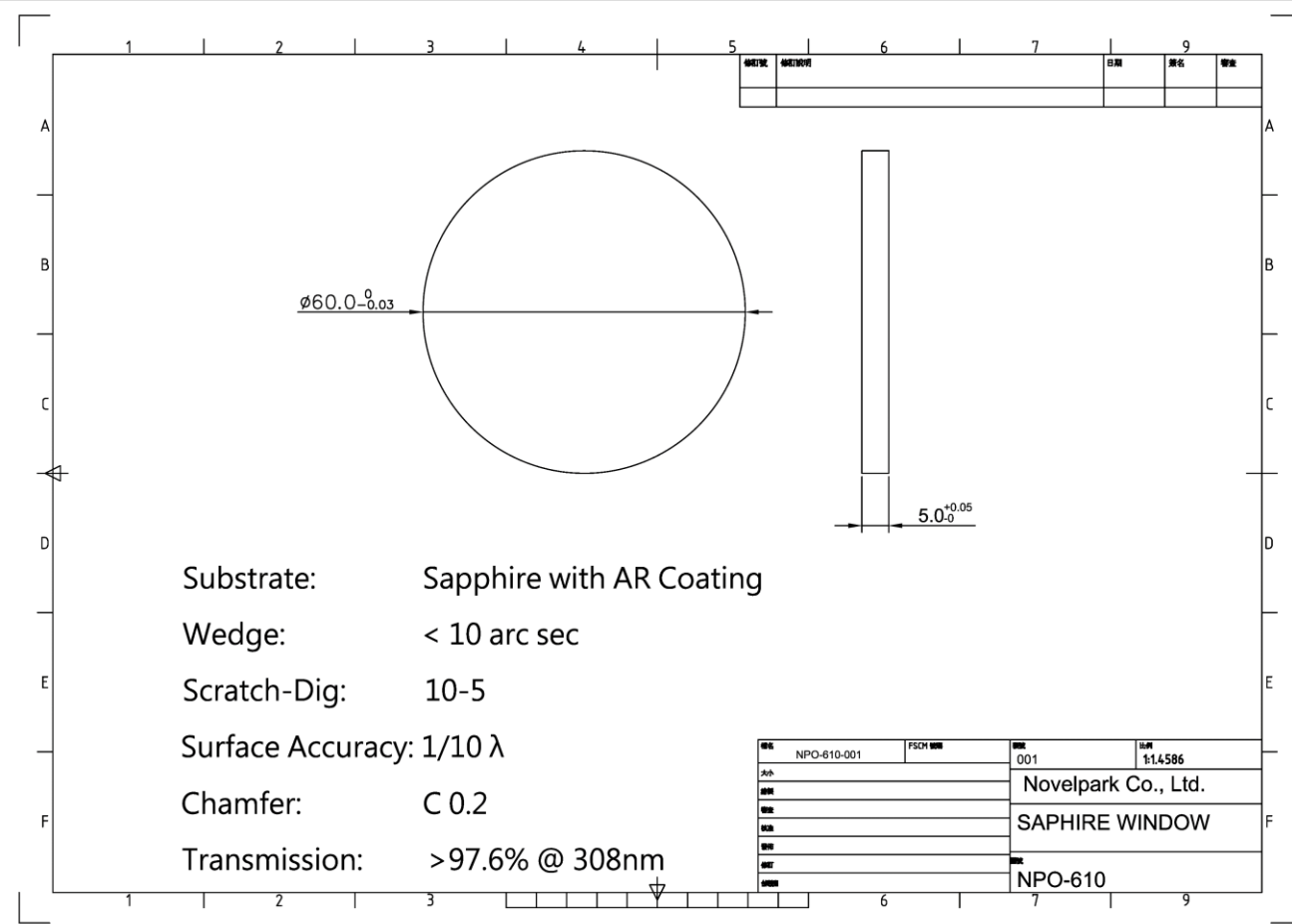
□ Material: Sapphire with AR/AR Coating

■ Specification

- Dimension: 60 mm
- Thickness: 5 mm
- Chamfer: C 0.2
- Wedge: < 10 arc sec
- Scratch-Dig: 10-5
- Surface Accuracy: $1/10 \lambda$
- Transmission: >97.6%



Window by Novelpark



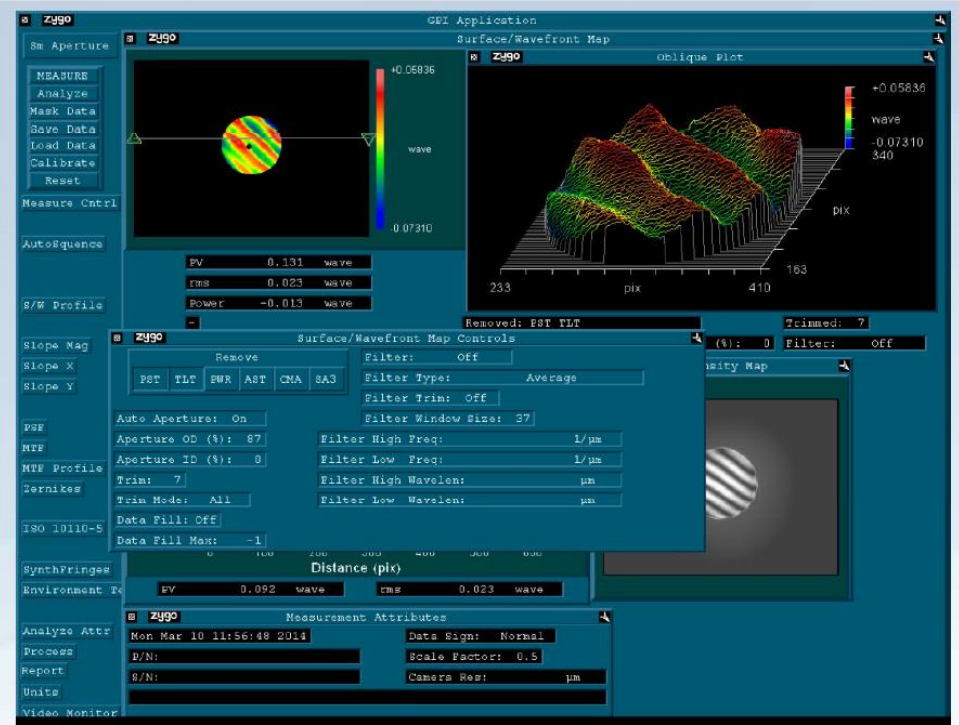
Window Analysis

□ PV Analysis

- Surface Accuracy: $1/10 \lambda$
- Measurement on Raw Material and End Product



ZYGO Interferometer



Spec : PV < 0.1 wave

Window Analysis

□ Wedge Analysis

- Spec. < 10 arc sec
- Measurement on Raw Material and End Product



TRI OPTICS (PRISM MASTER)

TRIOPTICS - Measurement Protocol

Company	Yunamoptics
Operator	J.E.Boong
Part No.	SAPPHIRE_ORIGINAL
Serial No.	01
Temperature [°C]	23.00
Date/Time	Mar Thu 2 09:57 2017
Measured with	PrismMaster_150 5-125-0011
Comment	check measurement

#	1-3
1	0.00 13.28
2	0.00 13.64
3	0.00 13.14
4	0.00 12.71
Nominal:	0.00 00.00
Tolerance:	0.00 00.00
Mean Value:	0.00 13.27
Std. Dev.:	0.00 00.44

Measurement Parameter

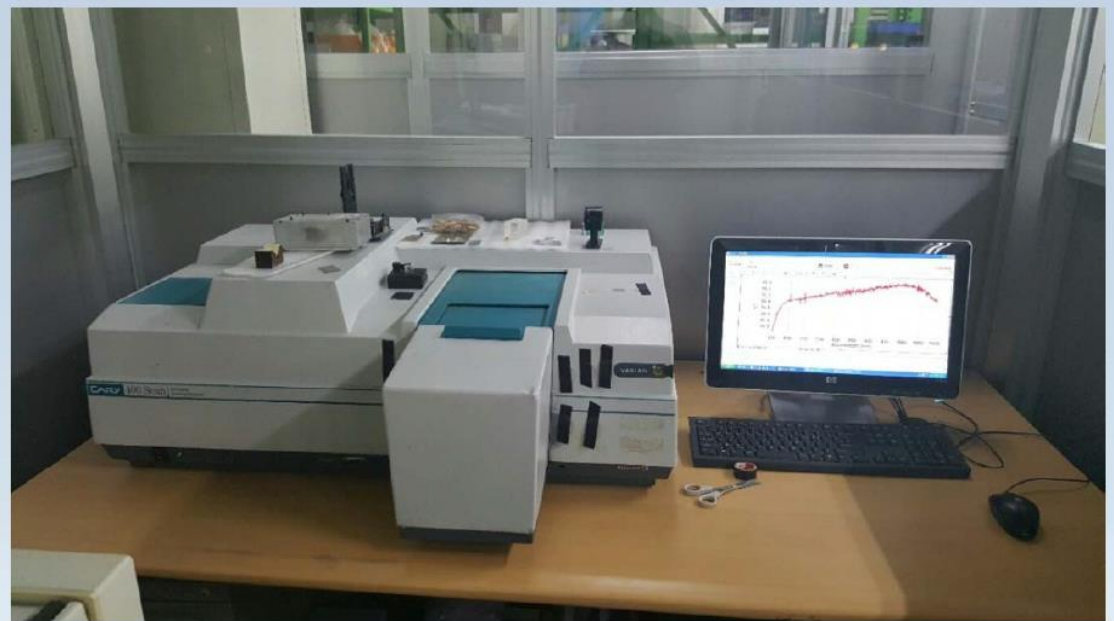
Design File | sapphire

Spec : Wedge < 10arc sec

Window Analysis

□ Transmittance Analysis

- Specification: $T > 84.0\%$ @ 308 nm on Raw Material
- Specification: $T > 97.6\%$ @ 308 nm on End Product



Spectrophotometer